

2014 - 2018



2014 - 2018

P
O F
R O
T L
:
:
O

CARRIN ROBERTSON

CARRIN ROBERTSON

PROJECTS AT CREATIVE SERVICES

A selection of Retail Projects from my time
at Creative Services



FAVOURITE PROJECT

It's hard to choose a favourite, but Anya Hindmarch's Press Day and Windows "Shag Shop", were playful and good fun.



TABLE OF CONTENTS

04 About Me

08 Anya Hindmarch

06 Tory Burch

10 Charlotte Olympia

A B O U T



CARRIN ROBERTSON

I worked at Creative Services from 2012-2018, and was a Project Manager from 2014 until 2018.

LET'S GO

I had the pleasure of designing and Project Managing a variety of exciting projects for forward-thinking brands.



EXPLORING

I loved experimenting with materials and production techniques.

Learning new skills and research into materials.





P R O J E C T

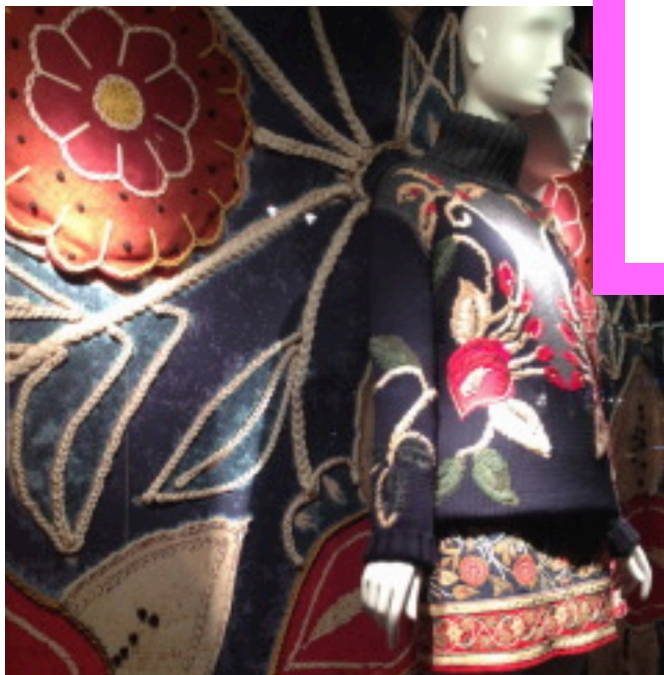
TORY BURCH

We created 3D textile walls within this window at Harrods to show the craftsmanship used to craft the brocade skirt and knitwear.



3D FLOWERS

I commissioned a textile specialist to hand dye and craft floral cushions for the walls.



PRINT

Working with our in house print team, we colour matched the walls to the product.

P R O J E C T



ANYA HINDMARCH

We designed, prototyped and crafted a circular stepped clad to showcase the footwear in Harrods Shoe Heaven



LA MURALLA ROJA

Inspired by Bofill's architecture, we created curved stepped units to sit in the surrounding shelves.

P J R E O C T



BRUCE THE LEOPARD ADVENT WINDOW AT MADDOX STREET

CHARLOTTE OLYMPIA

We created a giant leopard advent calander with illuminated apertures to showcase the shoe designs.



CREATIVE PROTOTYPING AND BUDGETS

Whilst at Creative Services, I worked in Project Management, seeing everything through from Design, to Production and Installation.

I am very hands-on and enjoy learning, so always got involved very much in the prototyping stages to offer ways to create the best results for our clients within their budget.

For example, this ladybird for Charlotte Olympia, rather than creating a hand-blown bespoke piece, we used off the shelf spheres and modified them at a lower cost to the client.



